

# Mounting rail socket SRD SGR2A KV2 PIK

for SGR282 ZK

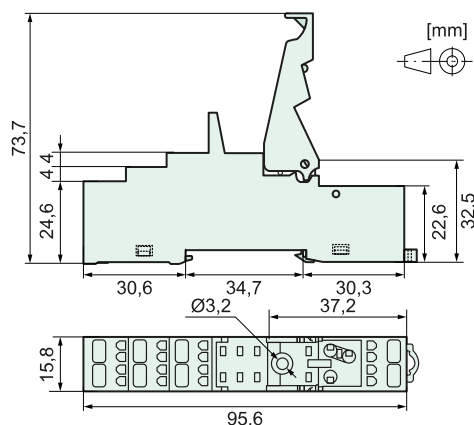


## Features

- Plug-in socket with push-in contacts (PIK)
- For relay series SGR282 ZK (VAR1, VAR2)
- Protective separation between coil and contacts
- With plastic retaining bracket
- Identification plate (1 piece)
- Mounting
  - on mounting rail 35 mm (IEC 60715)
  - central mounting with M3 screw



## Dimensions

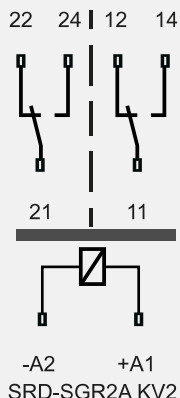


## Technical data

Limit continuous current*	8 A
Rated voltage	250 VAC
Connections:	
- Cross sections for wire	1 x 6 mm <sup>2</sup> or 2 x 2,5 mm <sup>2</sup>
- Cross sections for strand. wire	1 x 6 mm <sup>2</sup> or 2 x 2,5 mm <sup>2</sup>

\*max. note max. contact load in the relay data sheet

## Circuit diagram (top view)



## Insulation data

Rated insulation voltage (IEC 60664-1)	250 VAC
Basic insulation	— — —
- Air and creepage distance (min.)	4 mm
- Test voltage	2500 V <sub>rms</sub> / 1 min
Double or reinforced insulation	— — —
- Air and creepage distance (min.)	14 mm
- Test voltage	4000 V <sub>rms</sub> / 1 min
Creepage resistance	CTI 250
Pollution degree	2
Overvoltage category	III

## Mechanical data

Weight	approx. 40 g
--------	--------------

## Other data

Ambient temperature	-40 °C ... +70 °C
Approvals	cULus
UL File	E135170

## Mounting instructions

Mounting	on 35 mm mounting rail (IEC 60715)
Mounting	with central fastening Screw M3
- Torque	max. 1,28 Nm

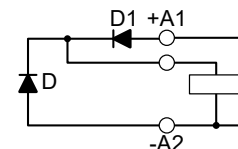
## Product key

SRD	SGR2	A	KV2	PIK
SRD	Socket type			Mounting rail socket
SGR2	Relay series			SGR282 ZK
A	Socket variant			
KV2	Contact variant			
PIK	Connection technology			Push-in contacts

## Options, Accessories

### SRD SGR2A M01

- Integrated freewheeling diode
- Integrated reverse polarity protection
- Suitable for 6 VDC to 220 VDC



### SRD SGR2A M03

- Integrated freewheeling diode
- Integrated reverse polarity protection
- green LED
- Suitable for 6 VDC to 24 VDC

