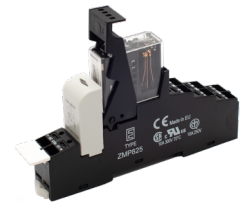


Mounting rail socket SRD-SGR2A KV2 PIK for SGR282 ZK

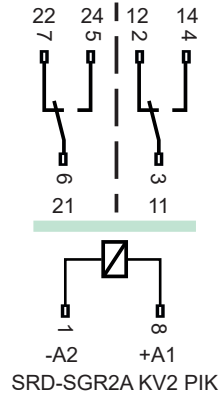


Features

- Plug-in socket with push-in contacts (PIK)
- For relay series SGR282 ZK
- Protective separation between coil and contacts
- With plastic retaining bracket
- Identification plate (1 piece)
- Mounting on 35 mm mounting rail (IEC 60715)
- Central fastening with M3 screw

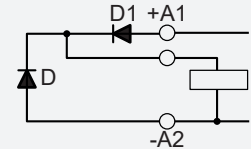


Circuit diagram

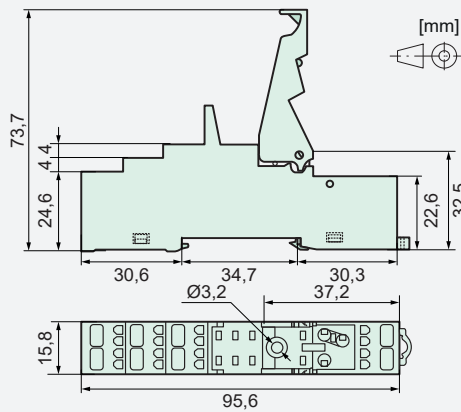


Module SRD-SGR2A-M01

- For mounting rail socket SRD-SGR2A KV2 and SRD-SGR2A KV2 PIK
- Integrated freewheeling diode
- Integrated reverse polarity protection
- Suitable for 6 VDC to 220 VDC



Dimensions



Insulation data

Basic insulation	at 250 VAC
Air and creepage distance	>4 mm
Test voltage	2500 V _{rms} / 1 min
Double or reinforced insulation	at 250 VAC
Air and creepage distance	>8 mm
Test voltage	4000 V _{rms} / 1 min
Creepage resistance	CTI 250
Pollution degree	2
Overvoltage category	III

Additional data

Weight	approx. 40 g
Ambient temperature	-40°C ... +70°C

Tests, regulations, standards

Approvals	cULus
UL File	E135170
Insulation group according to IEC 60664-1	250 VAC
Standards	IEC 61810-1, UL 508

Options, Accessories

Display and protection modules	SRD-SGR2A-M01, SRD-SGR2A-M03
--------------------------------	------------------------------

Mounting instructions

Mounting	on 35 mm mounting rail (IEC 60715)
Mounting	with central fastening Screw M3
Torque	max. 1,28 Nm

Product key

SRD	SGR2	A	KV2	PIK
Socket type	Relay series	Socket variant	Contact variant	Connection technology

Technical data

Limit continuous current*	8 A
Rated voltage	250 VAC
Connections:	
- Cross sections for wire	2 x 0,2 ... 2,5 mm ²
- Cross sections for stranded wire	2 x 0,2 ... 1,5 mm ²

*note max. contact load in the relay data sheet

Module SRD-SGR2A-M03

- For mounting rail socket SRD-SGR2A KV2 and SRD-SGR2A KV2 PIK
- Integrated freewheeling diode
- Integrated reverse polarity protection
- Green LED with current limiting resistor
- Suitable for 6 VDC to 24 VDC

