

# Mounting rail socket

## SRD SGR2A KV2

for SGR282 ZK

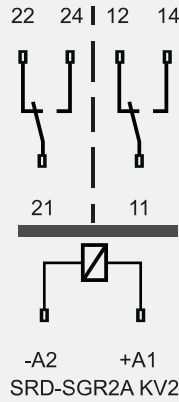


### Features

- Plug-in socket with screw terminals
- For relay series SGR282 ZK (VAR1, VAR2)
- Protective separation between coil and contacts
- With plastic retaining bracket
- Identification plate (1 piece)
- Mounting
  - on mounting rail 35 mm (IEC 60715)
  - central mounting with M3 screw



### Circuit diagram (top view)



### Insulation data

Rated insulation voltage (IEC 60664-1)	250 VAC
Basic insulation	— — —
- Air and creepage distance (min.)	4 mm
- Test voltage	2500 V <sub>rms</sub> / 1 min
Double or reinforced insulation	— — —
- Air and creepage distance (min.)	14 mm
- Test voltage	4000 V <sub>rms</sub> / 1 min
Creepage resistance	CTI 250
Pollution degree	2
Overvoltage category	III

### Mechanical data

Weight	approx. 46 g
--------	--------------

### Other data

Ambient temperature	-40 °C ... +70 °C
Approvals	cULus
UL File	E135170

### Mounting instructions

Mounting	on 35 mm mounting rail (IEC 60715)
Mounting	with central fastening Screw M3
- Torque	max. 1,28 Nm

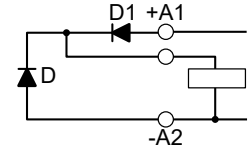
### Product key

SRD	SGR2	A	KV2
SRD	Socket type	Mounting rail socket	
SGR2	Relay series	SGR282 ZK	
A	Socket variant		
KV2	Contact variant		

### Options, Accessories

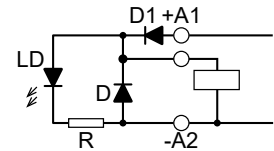
#### SRD SGR2A M01

- Integrated freewheeling diode
- Integrated reverse polarity protection
- Suitable for 6 VDC to 220 VDC

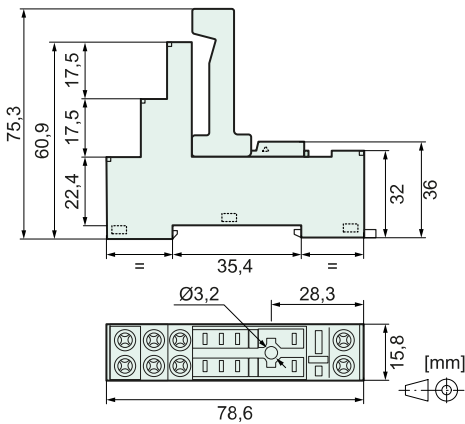


#### SRD SGR2A M03

- Integrated freewheeling diode
- Integrated reverse polarity protection
- green LED
- Suitable for 6 VDC to 24 VDC



### Dimensions



### Technical data

Limit continuous current*	8 A
Rated voltage	250 VAC
Connections:	
- Cross sections for wire	1 x 6 mm <sup>2</sup> or 2 x 2,5 mm <sup>2</sup>
- Cross sections for strand. wire	1 x 6 mm <sup>2</sup> or 2 x 2,5 mm <sup>2</sup>
- Torque	max. 0,5 Nm

\*max. note max. contact load in the relay data sheet